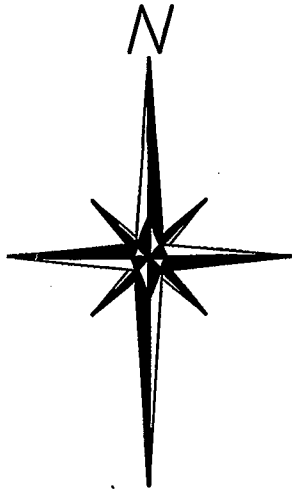
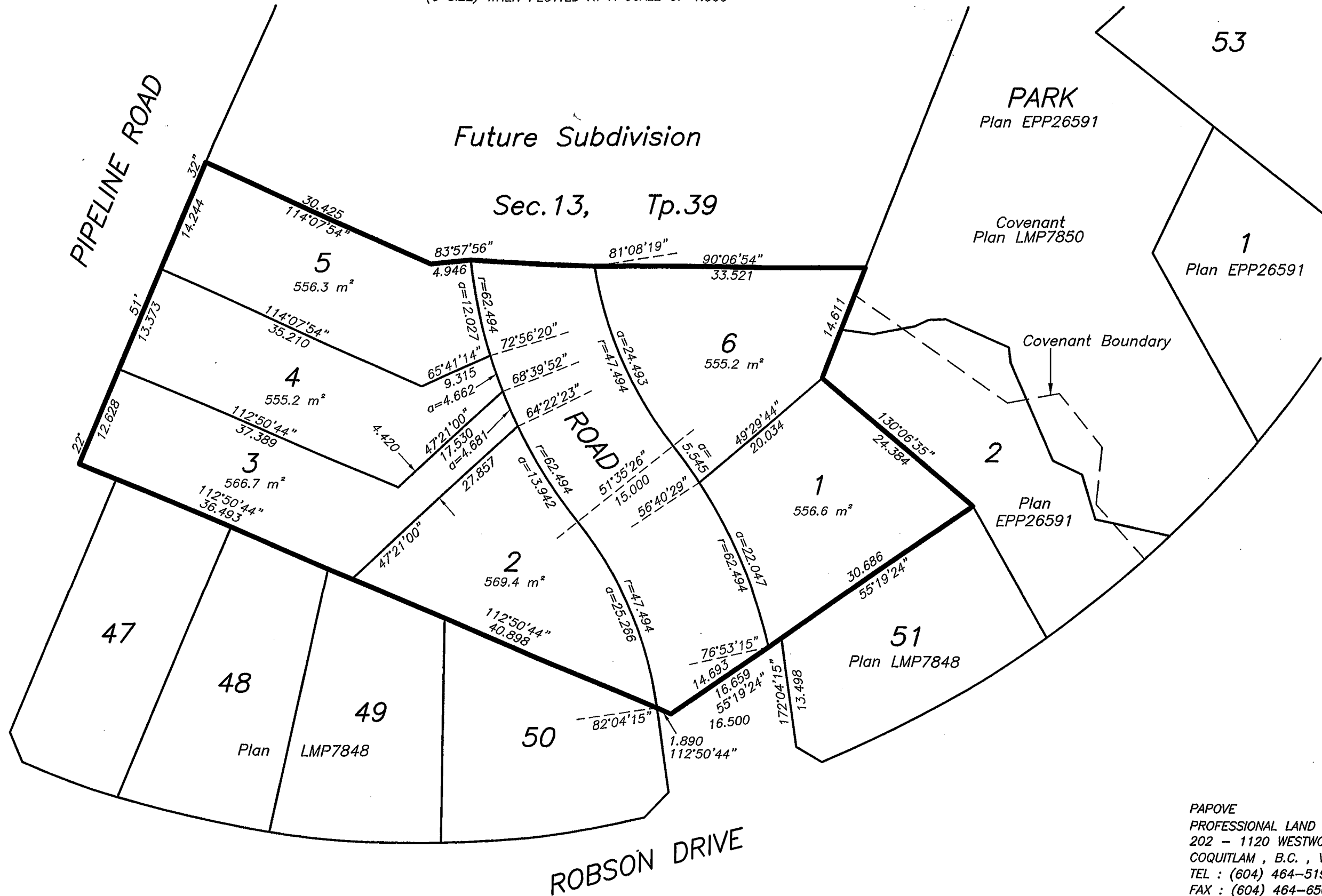


SKETCH SHOWING A PORTION OF PROPOSED LOT 1,
SECTION 13, TOWNSHIP 39, NEW WESTMINSTER DISTRICT



THE INTENDED PLOT SIZE OF THIS PLAN
IS 432mm IN WIDTH BY 560mm IN HEIGHT
(C SIZE) WHEN PLOTTED AT A SCALE OF 1:500



PAPOVE
PROFESSIONAL LAND SURVEYING INC.
202 - 1120 WESTWOOD STREET
COQUITLAM, B.C., V3B 7K8
TEL : (604) 464-5199
FAX : (604) 464-6509
FILE NUMBER :5684V.....

Lot dimensions shown
are preliminary and
subject to City approval.
Plan prepared: August 15, 2014